



Rackmount 2 RU Profile for
Broadcast Video

SBT3-5110 / 7110 SERIES

The Streambox Platform

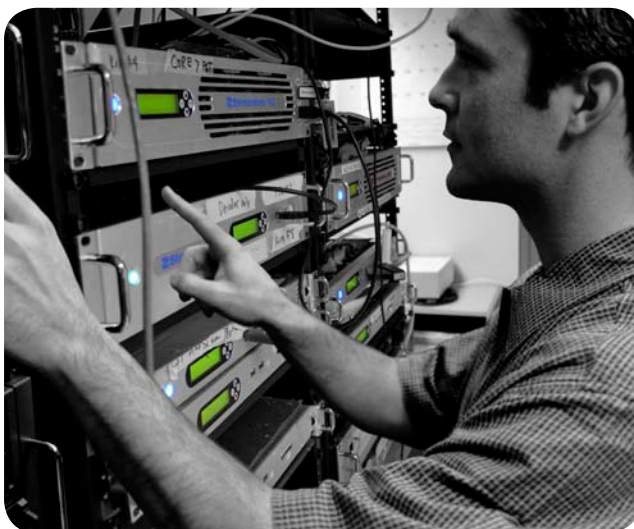


Target Markets and Applications

Backhaul video transport • Digital newsgathering • Satellite video transport • Video conferencing • Point-to-point and point-to-multipoint video distribution • Law enforcement • Surveillance and security • Centralcast television • Telemedicine • Online and distance learning

The Streambox SBT3-5110 and 7110 series video transport solutions are true 24/7 plug-and-connect live and file-based video transport solutions that deliver stunning full-motion, full frame interlaced broadcast video and audio over T1/E1, satellite, and IP-based networks. Streambox ACT-L3 encoders excel over low bandwidth connections while providing unrivaled video compression and quality.

Our SBT3-5110 and 7110 solutions provide best-of-class performance and reliability due to their unrivaled video compression and error correction technologies. The systems also enable broadcasters and others to leverage the store and forward option which provides enhanced storage, management, and transmission of video over packet-based networks.



The Single T1 SBT3-5110 solution is our primary broadcast video transport system. The SBT3-7110 includes the same features as the SBT3-5110 plus:

- Dual networking for T1/E1
- Multi-channel audio with up to six channels of embedded SDI

SOLUTION FEATURES

- Unrivaled video compression and quality at low data rates
- 4:2:0 and 4:2:2 color profiles
- Best-of-class performance and reliability with advanced networking features
- Advanced forward error correction and burst error protection
- Low end-to-end latency. Provides adjustable latency for video conferencing or broadcasting
- Cost-effective newsgathering and video conferencing
- Seamless local or remote system management via an easy-to-use web interface
- Optional store and forward feature for enhanced storage, management, and transmission of video over packet-based networks
- Single networking for T1/E1 (SBT3-5110 only)
- Dual networking for T1/E1 (SBT3-7110 only)
- Multi-channel audio with six channels of embedded SDI (SBT3-7100 only)
- Half duplex mode (encoder only) is provided for easy switching between encoder and decoder modes
- User configurable presets for quick and flexible setup

ENCODER



*Second T1/E1 applies only to the 7110 series.

DECODER



*Second T1/E1 applies only to the 7110 series.

TECHNICAL SPECIFICATIONS

Video Formats:	NTSC/59.94i, PAL/50i
Video Encoding:	Resolution: D1, 3/4, 2/3, 1/2, CIF, QVGA Frame rate: full, 3/4, 1/2, 1/3, 1/4, 1/5, 1/10
Audio Codecs:	AAC, GSM, and CELP Up to 64 Kbps per channel 44.1 or 48 KHz sampling rate
Streaming Rate:	User selectable from 64 Kbps to 8 Mbps
Audio Inputs:	2-ch SDI (5110), 6-ch SDI (7110), 2-ch AES, 2-ch Analog XLR
Audio Outputs:	2-ch SDI (5110), 6-ch SDI (7110), 2-ch AES, 2-ch Analog XLR
Closed Caption:	Line 21 encoding, transmission, and decoding
Video System:	D/A and A/D. Time-Base Correction for analog video. Genlock. Audio embedding/de-embedding
Video Inputs:	Composite, SDI (SMPTE-259M), Genlock
Video Outputs:	Composite, SDI (SMPTE-259M), Genlock
Encoding Latency:	Adjustable from .2 seconds to 10 seconds
Video Post Filtering:	Advanced interlaced/progressive post filtering, including de-blocking, de-mosquito, and anti-aliasing
Video Pre-filtering:	Noise pre-filter, adjustable de-interlacing
Network Interfaces:	Ethernet, Single T1/E1 (SBT3-5110), Dual T1/E1 (SBT3-7110)
Network Protocol:	Stream: Multicast/Unicast UDP and IP Web Interface and Remote Desktop: TCP
Setup & Control:	Front access LCD panel and keypad. SSD storage for reliability and upgrades. VGA output, USB ports
Forward Error Correction:	Adjustable, 0% to 50%, Reed-Solomon, Parity, Shuffle
Options:	Store and Forward
Power Requirement:	100-240 V AC 50/60 Hz
Power Consumption:	150W maximum
Dimensions:	2 RU 3.5"H x 16.75"W x 16.25"D 8.9cm H x 42.5cm W x 41.3cm D
Weight:	25 lbs, 11.3 kg



Streambox, Inc.
1848 Westlake Ave N
Seattle, WA 98109
206-956-0544
www.streambox.com